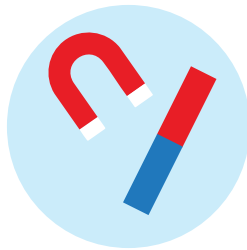


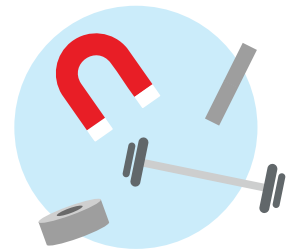
**1. Bar magnets have two poles. What are they?**

- A** North and South
- B** Red and Blue
- C** East and West
- D** Red and White



**2. What is the strongest permanent magnet made?**

- A** Alnico
- B** Ferrite
- C** Neodymium
- D** Samarium-Colbalt



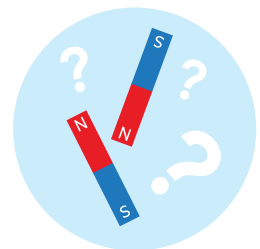
**3. What is a magnetic field?**

- A** A farm field full of animal magnets.
- B** An invisible force surrounding the area around the magnet.
- C** Two magnets placed next to each other.
- D** An invisible magnet.



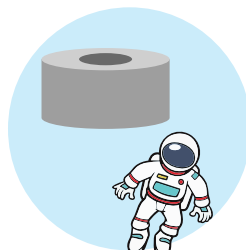
**4. What happens when you push two north poles together?**

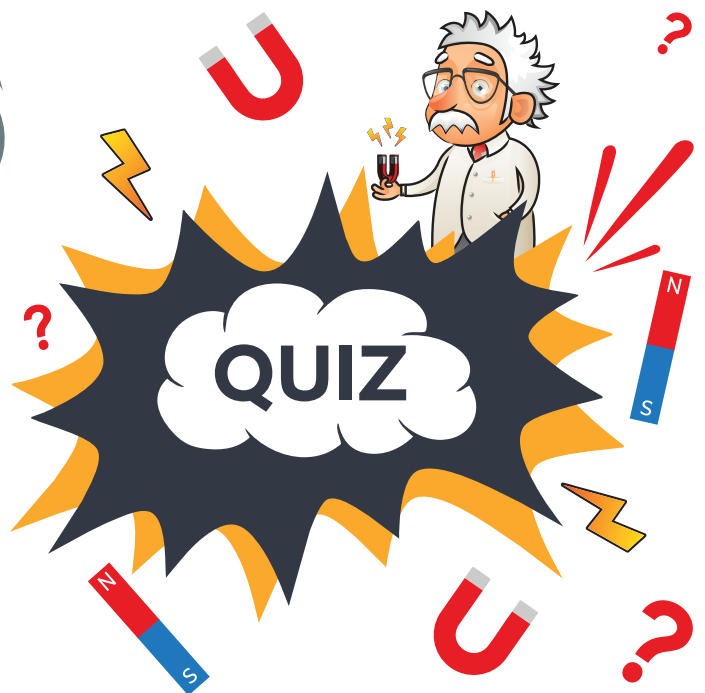
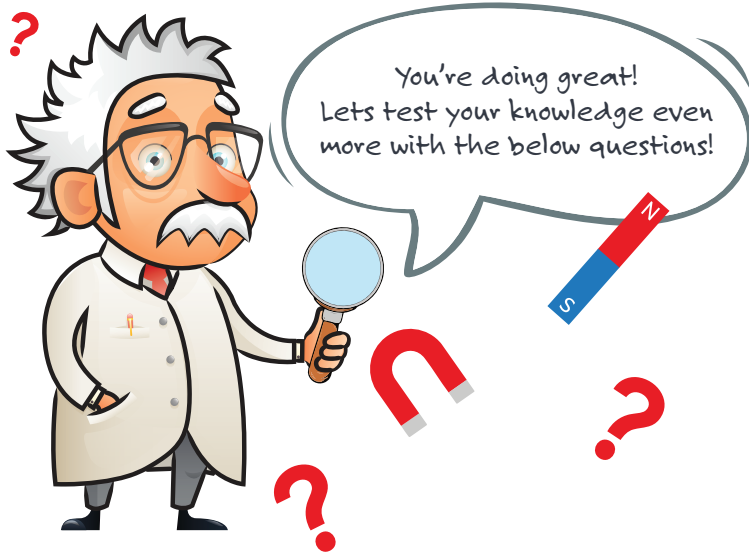
- A** They break
- B** They attract
- C** They repel
- D** The float



**5. What is an Electromagnet?**

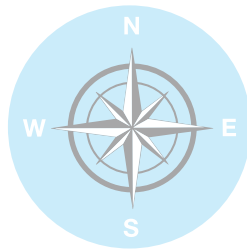
- A** Magnets that are found in space.
- B** A magnet that runs without electricity.
- C** A magnet that lights up like a light bulb.
- D** A magnet that runs on electricity.





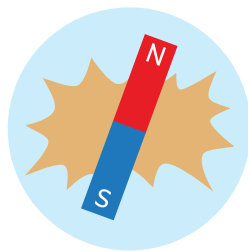
6. What would you detect by using a compass, iron fillings and iron objects?

- A Oxygen
- B Electricity
- C Directions
- D Magnetic field



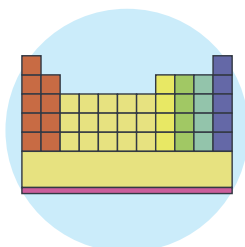
8. Magnetism is a type of what?

- A Electricity
- B Force
- C Element
- D Matter



10. What is the element for neodymium?

- A Nd
- B Nx
- C Mg
- D NYC



7. What does repel mean?

- A Magnets that aren't magnetic.
- B Magnets that pull together.
- C Magnets that move away from each other.
- D Magnets that are U shaped.



9. Which one of the below materials will attract to a magnet?

- A Water
- B Wood
- C Copper
- D Iron

